



Newcastle-under-Lyme

Local Plan

2020-2040



July 2024
Newcastle-under-Lyme Borough Local Plan
Policies Map

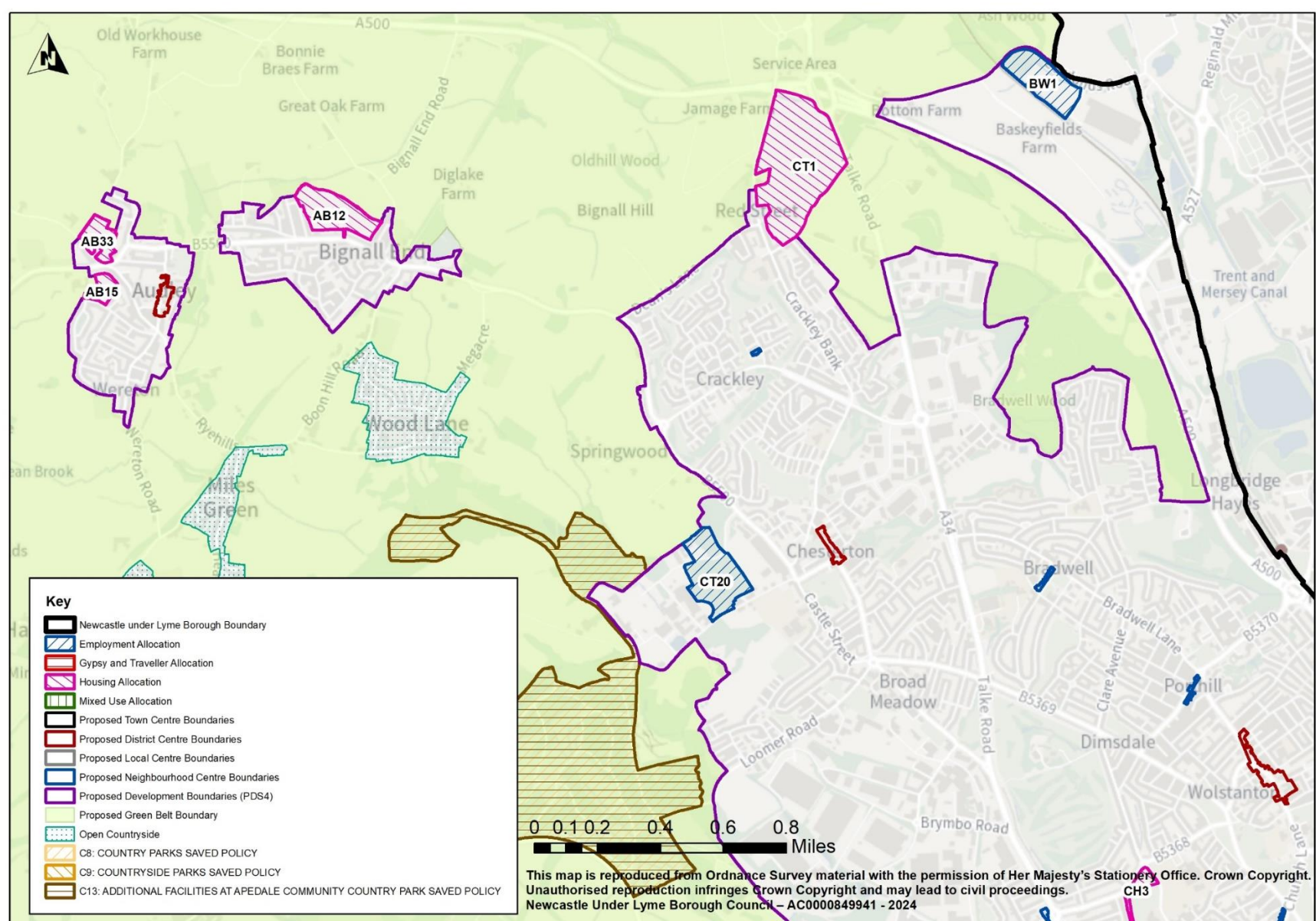
Newcastle-under-Lyme Borough Council

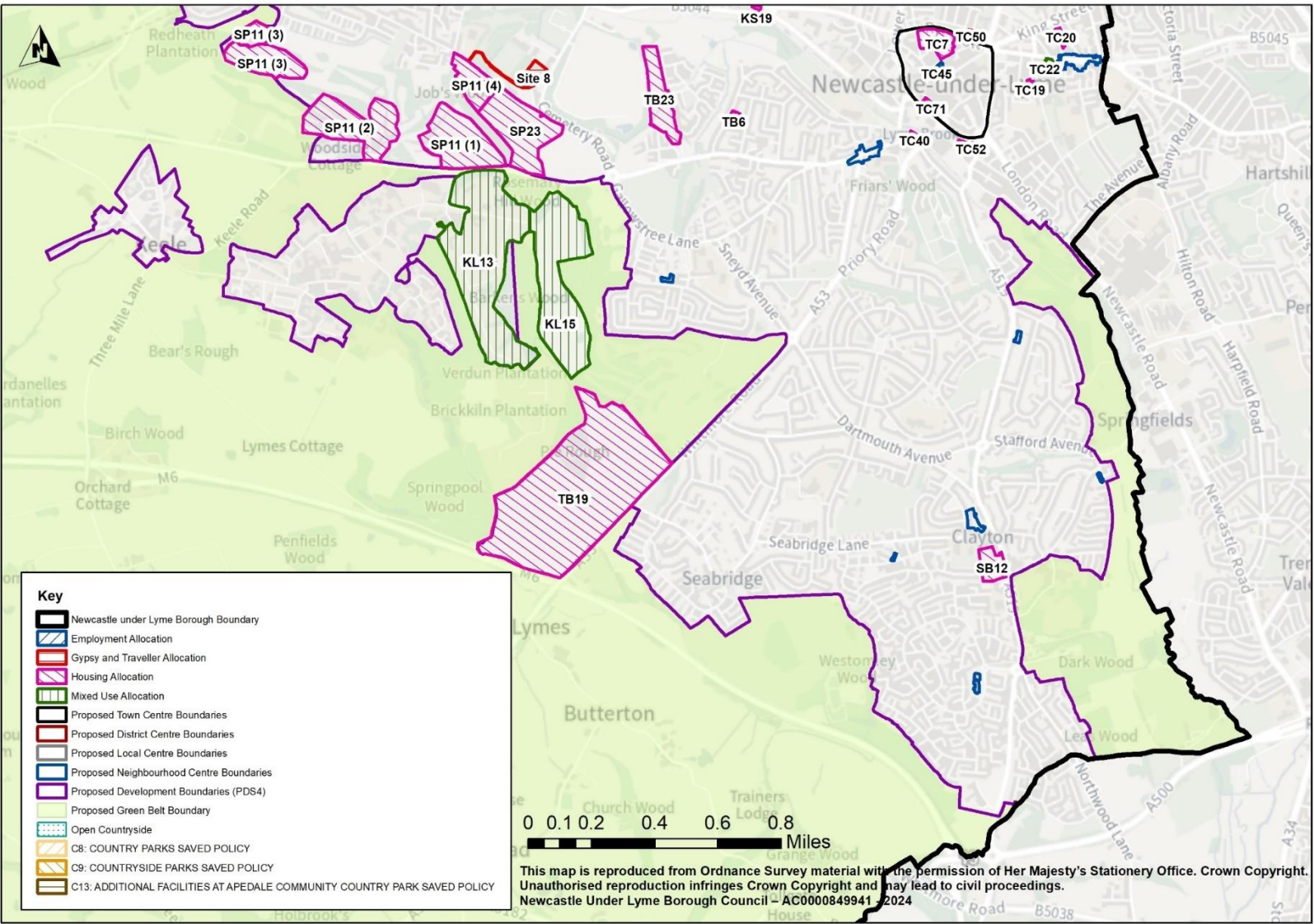
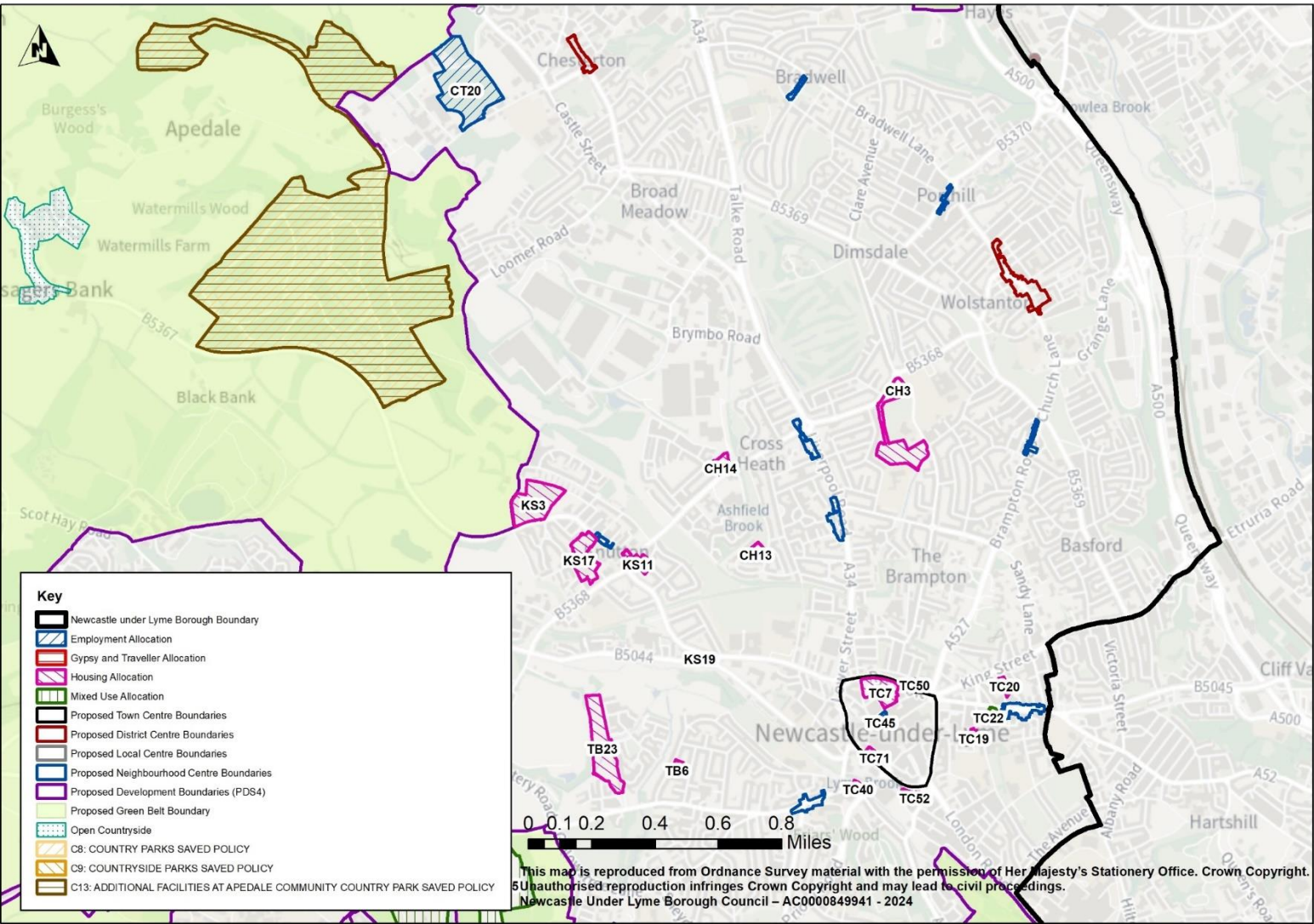
Local Plan 2020 – 2040

Policies Booklet – Maps

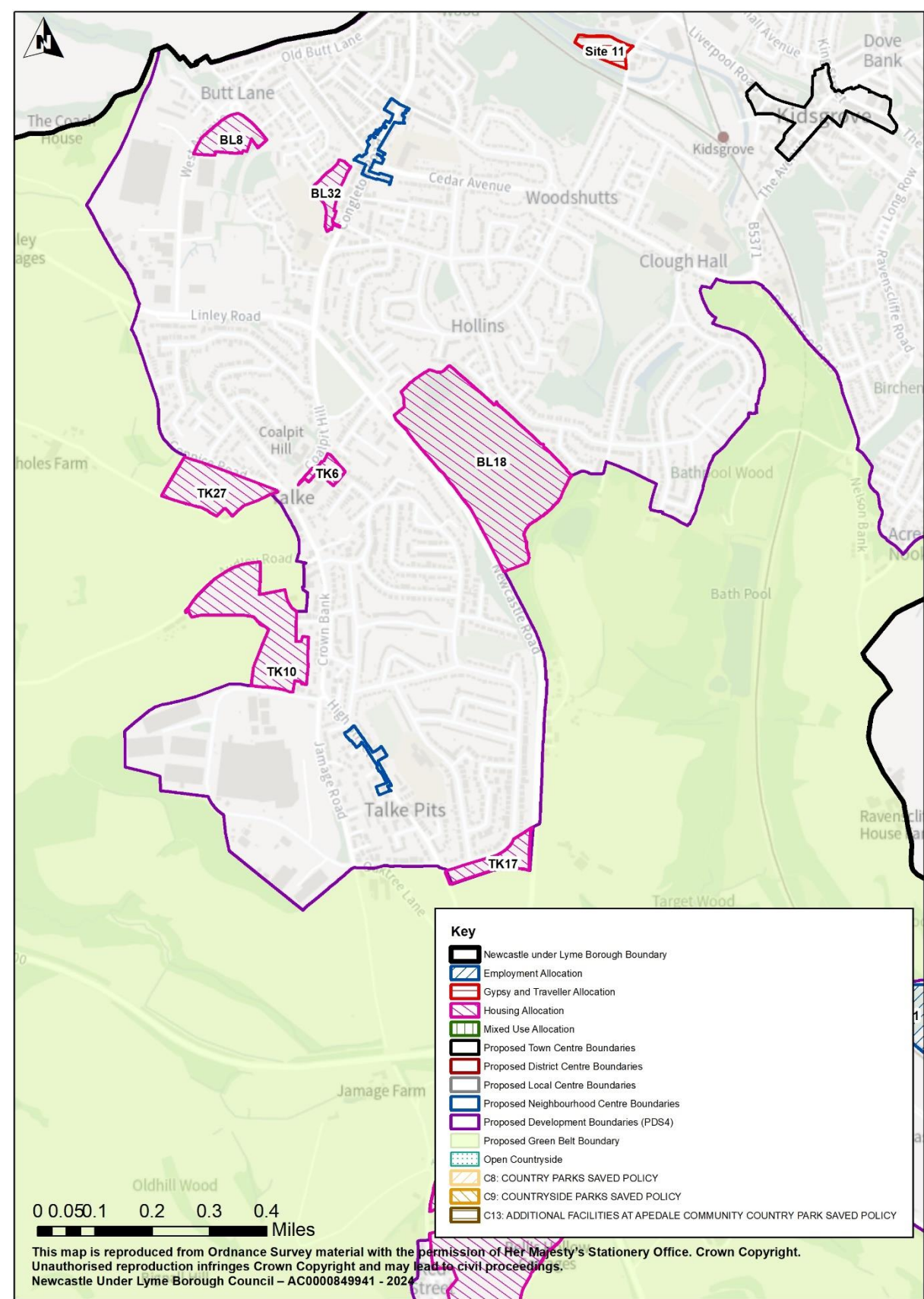
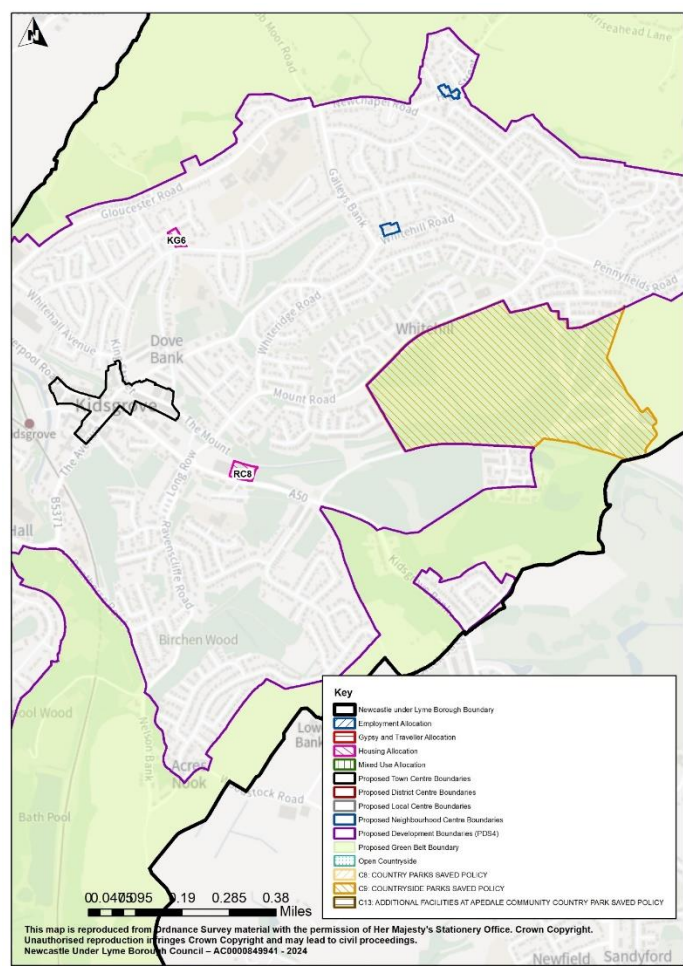
1. This booklet version of the Policies Map shows the spatial extent of policies included in the Local Plan. It should be considered alongside a host of other designations included but not necessary set by the Local Plan. To include all of the spatial information on the maps presented below would make the Plan difficult to interpret. Therefore, due to the practicalities of showing a significant amount of information on one plan, it does not cover all relevant matters such as flood zones, listed buildings and other designations. Each settlement in the upper tiers of the settlement hierarchy are included in the Policies Booklet alongside a key.
2. An interactive version of the Local Plan Policies Map has also been produced to support the interpretation of the proposals in the Local Plan. The interactive version of the Local Plan can be accessed via the following website link:-
<https://nulbc.maps.arcgis.com/apps/webappviewer/index.html?id=ca445091b08f46188949022a491f2a99>

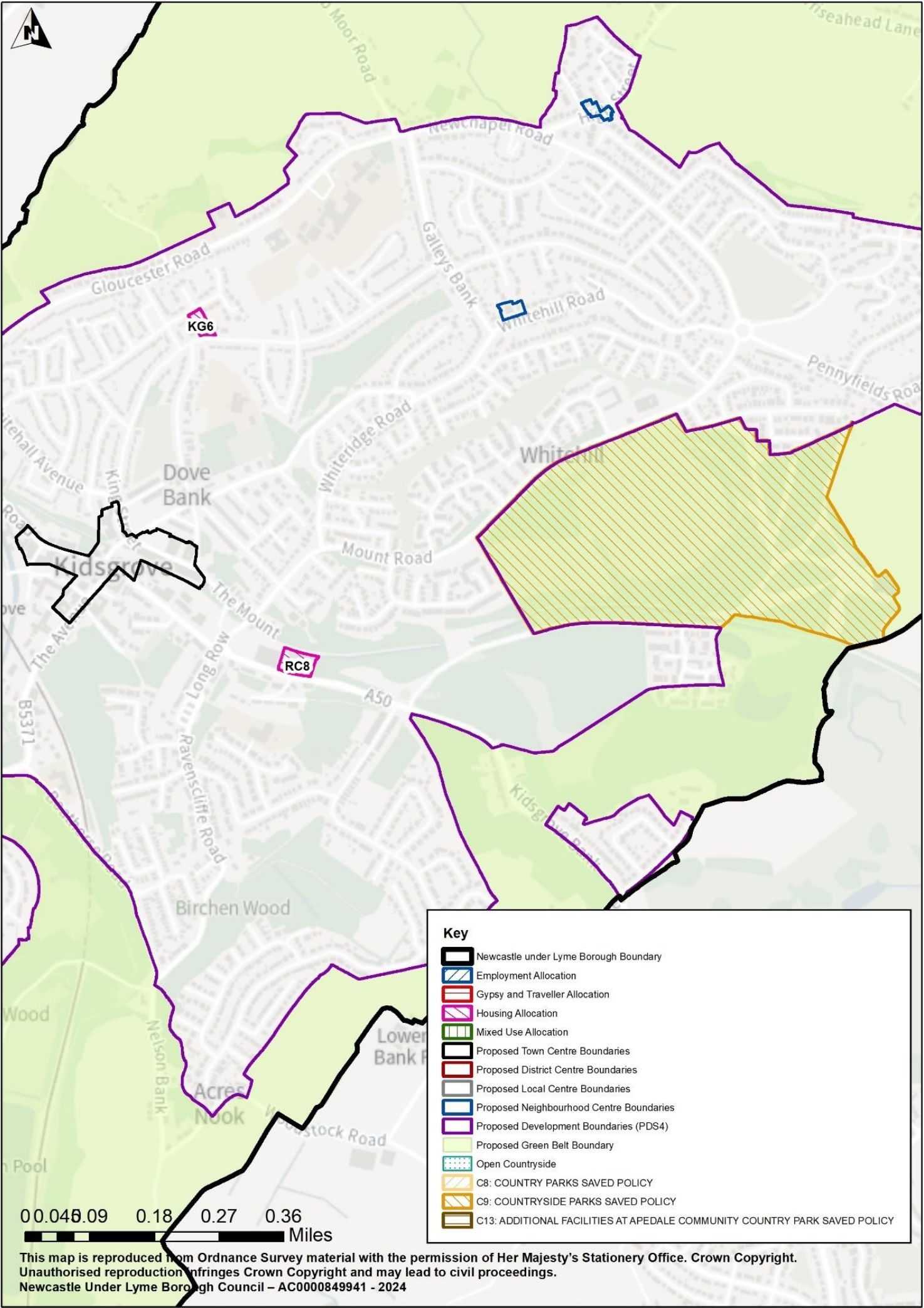
2

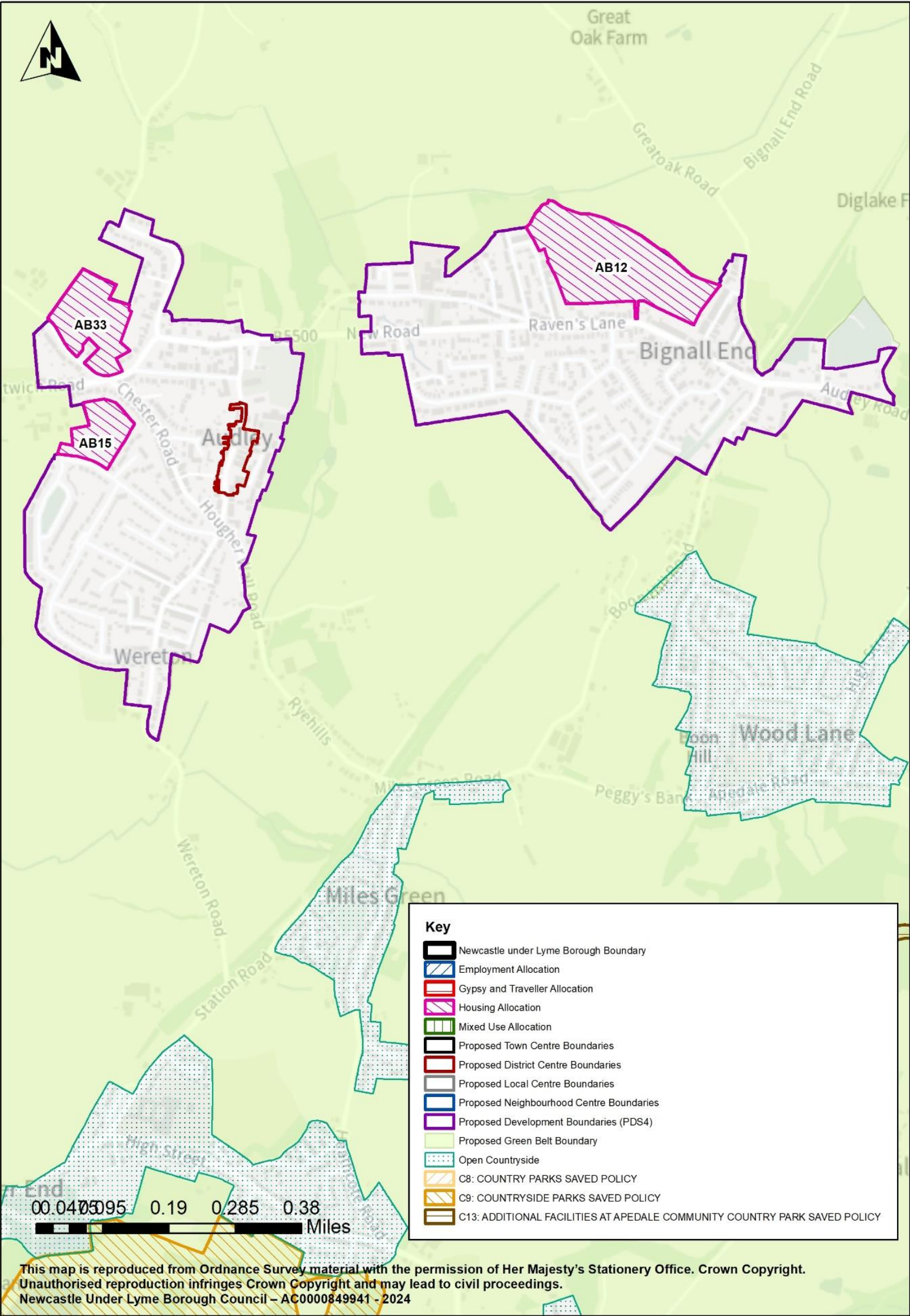


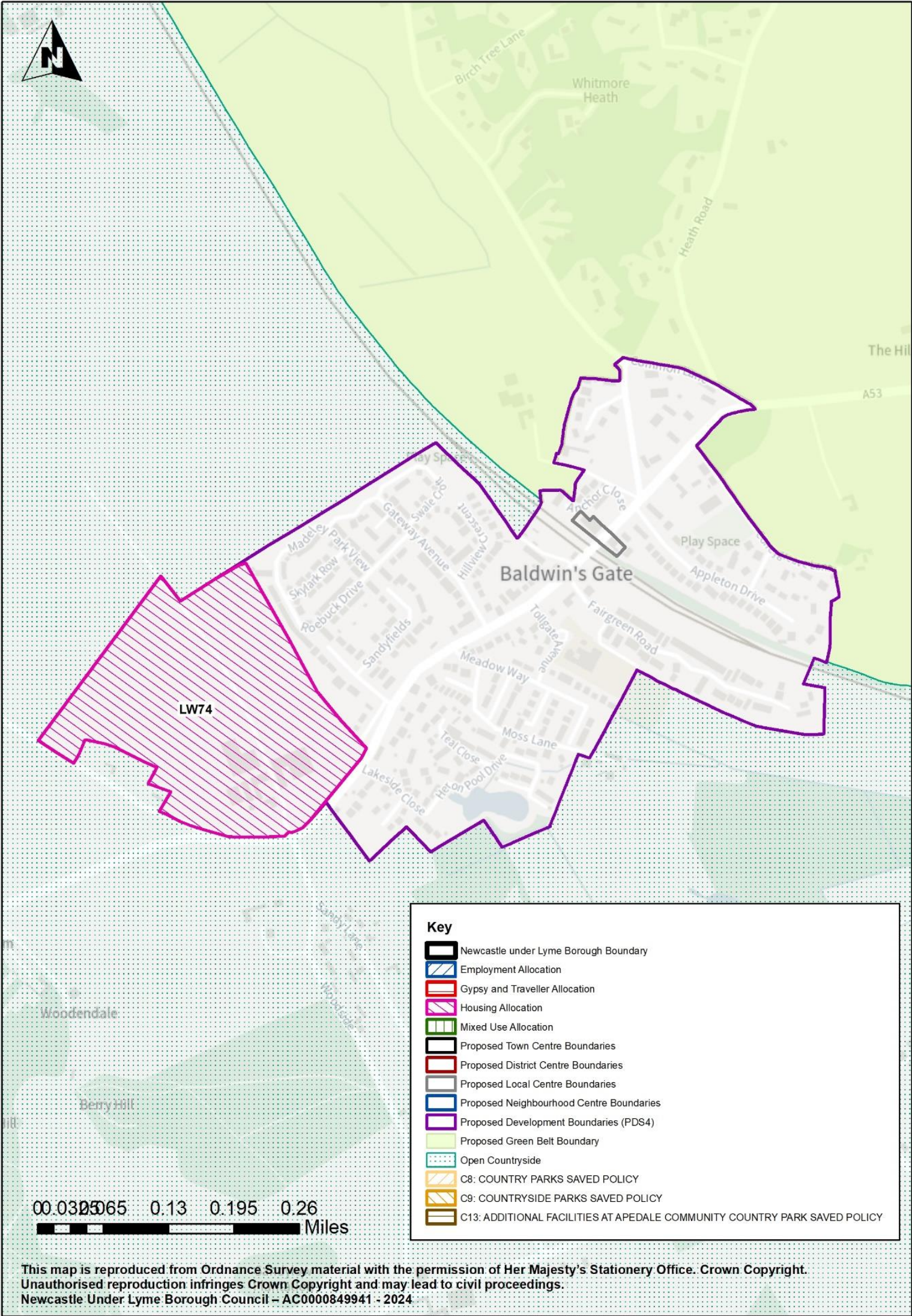


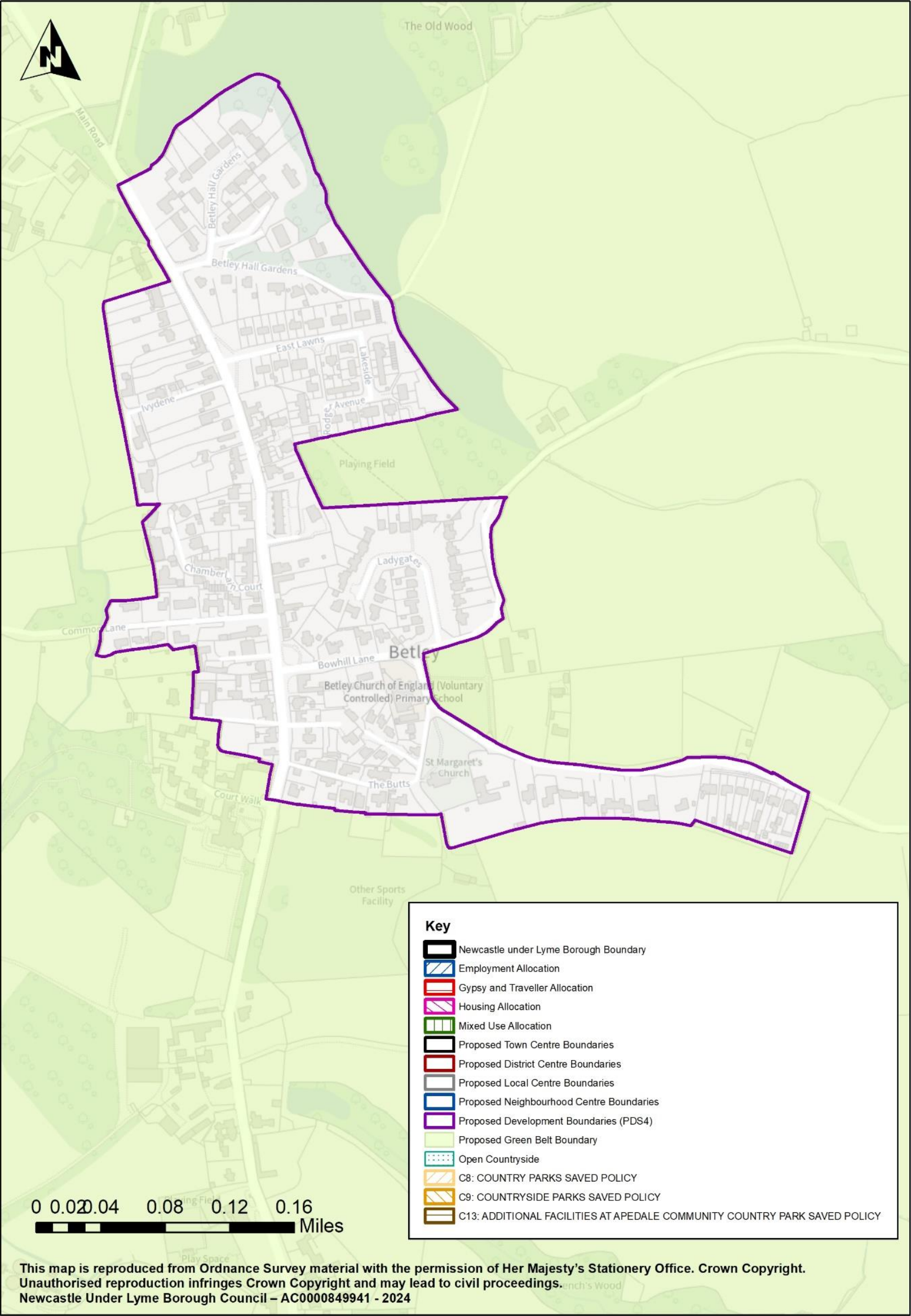
Urban Centre – Kidsgrove

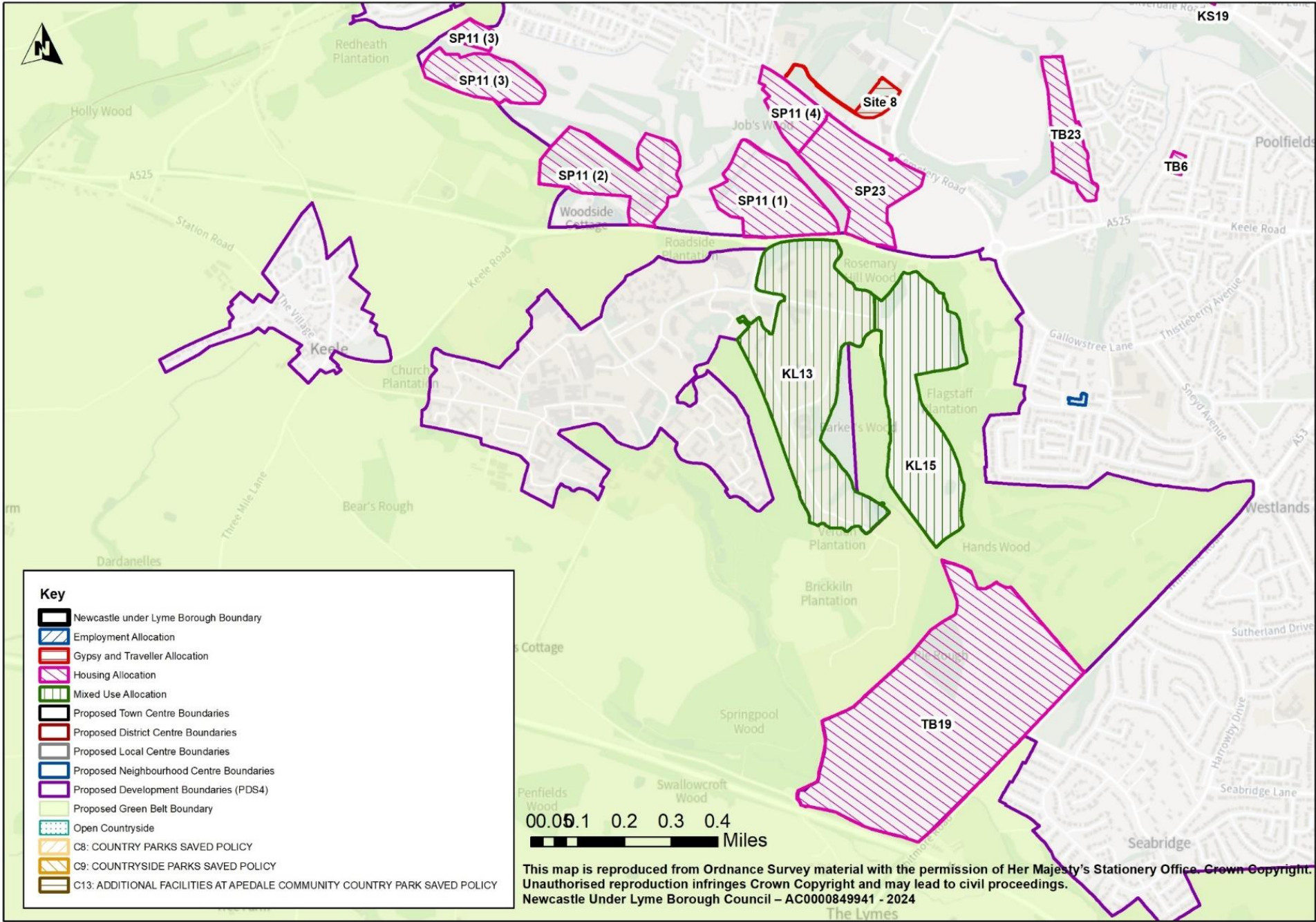


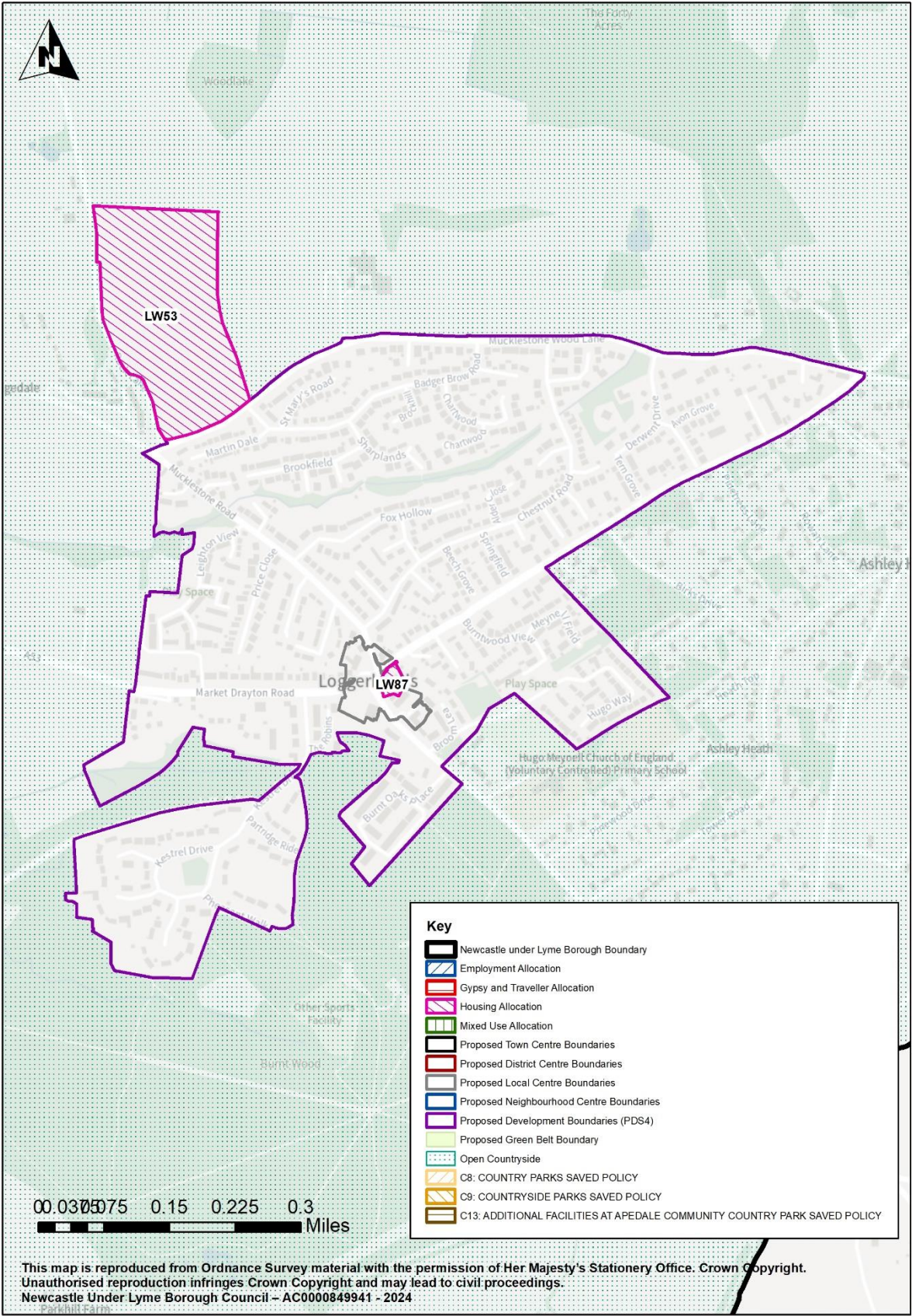


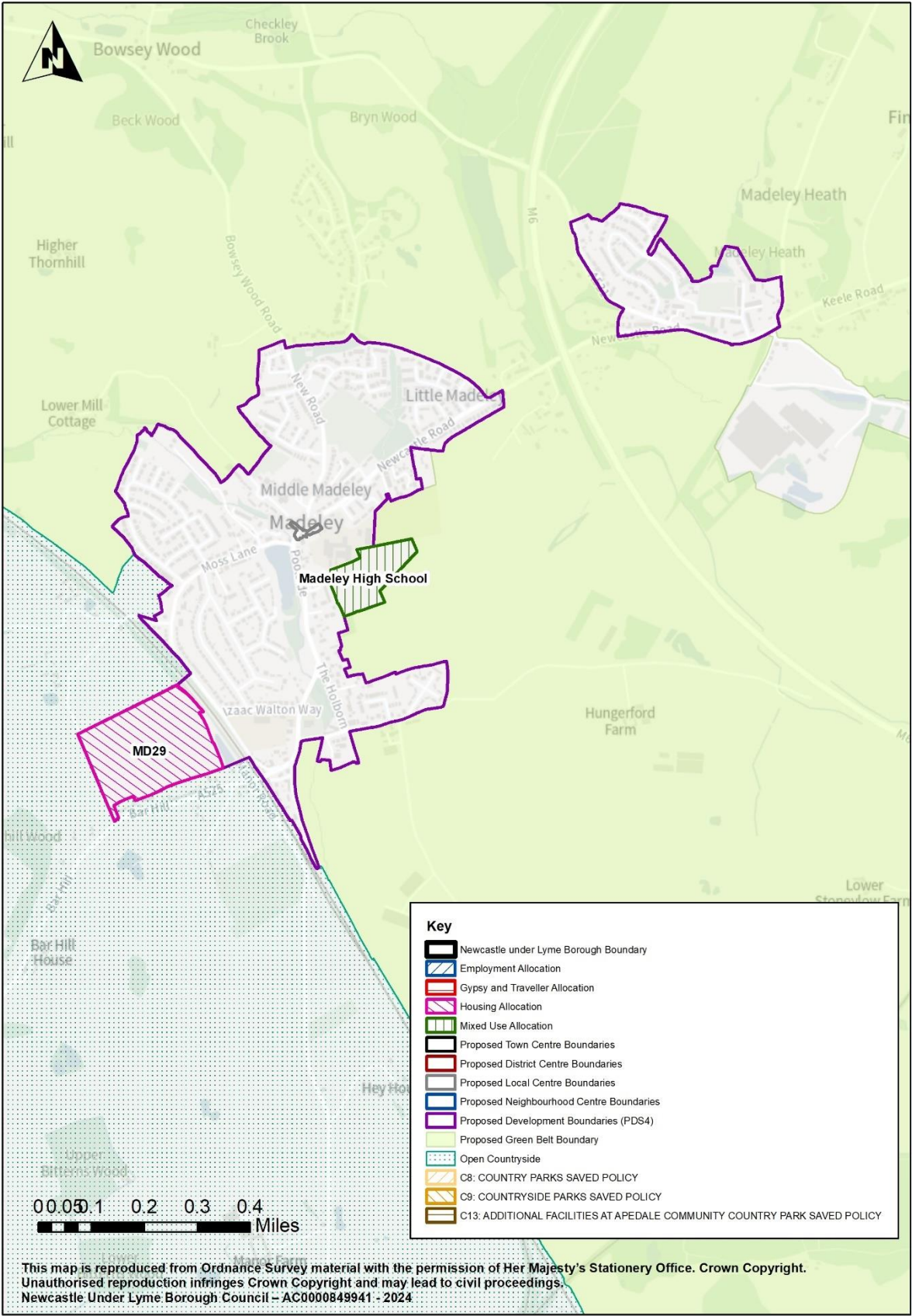


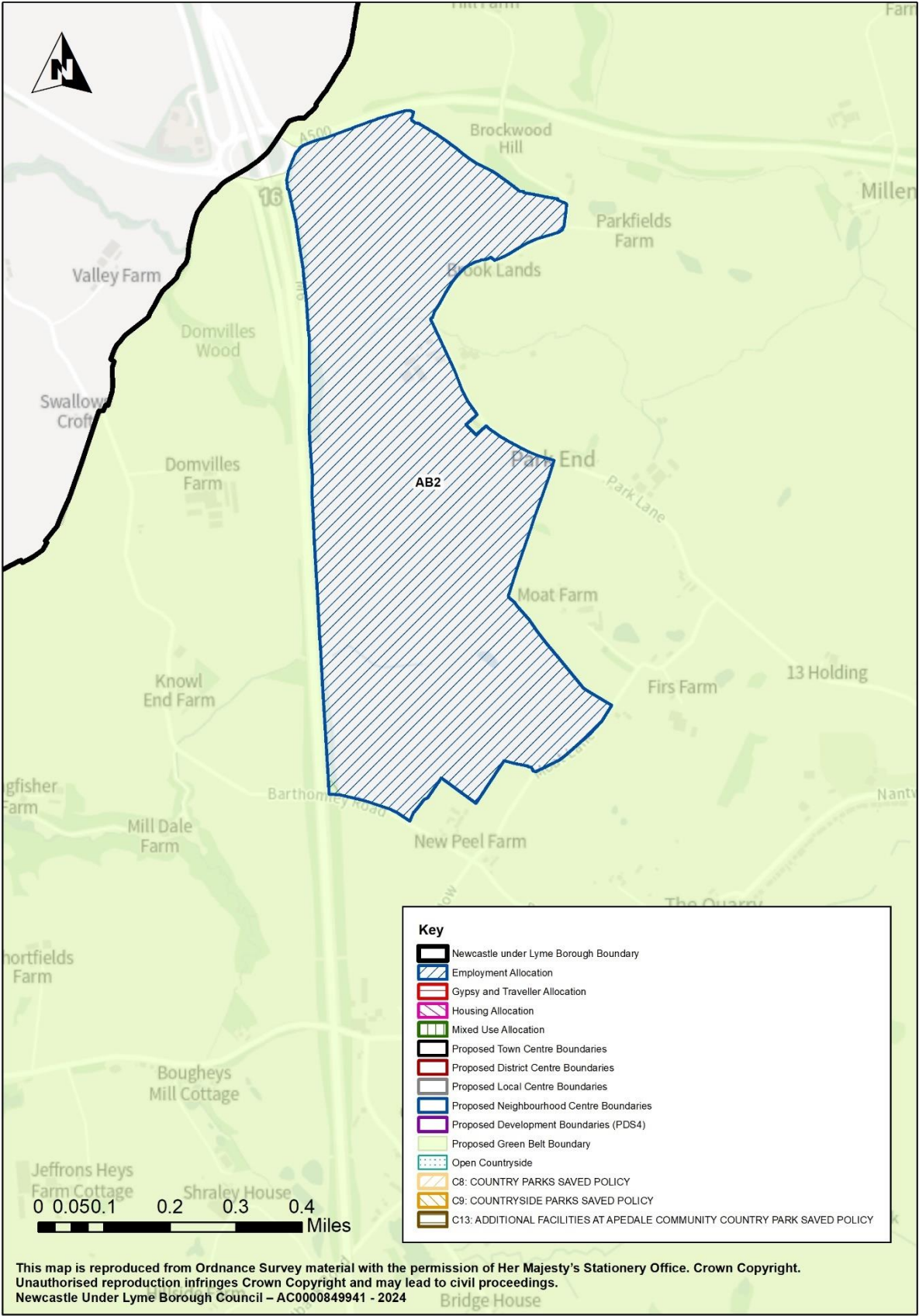




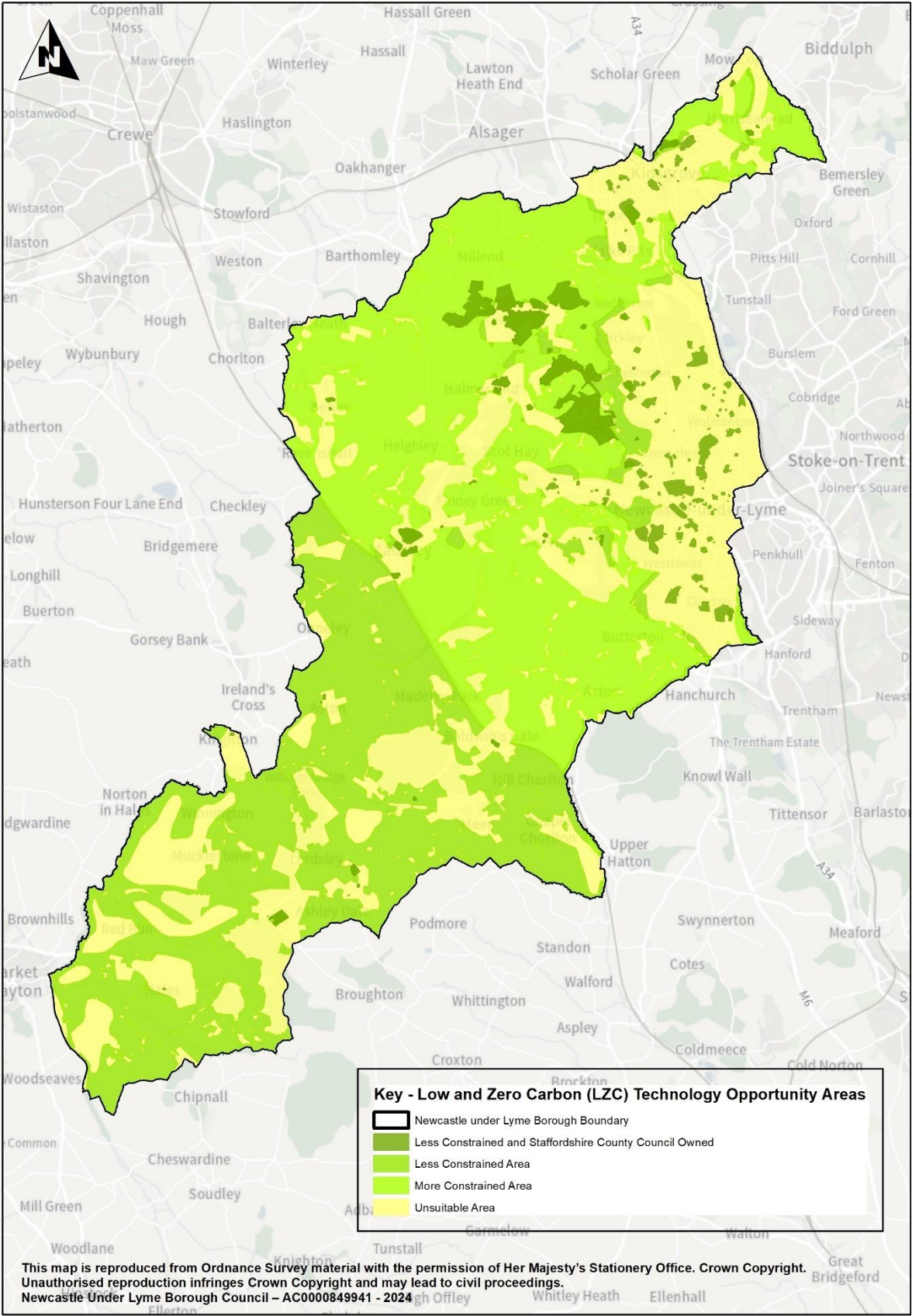








Low and Zero Carbon (LZC) Opportunity Areas



Ward Values

