

Brampton Museum Sensory Map

Key

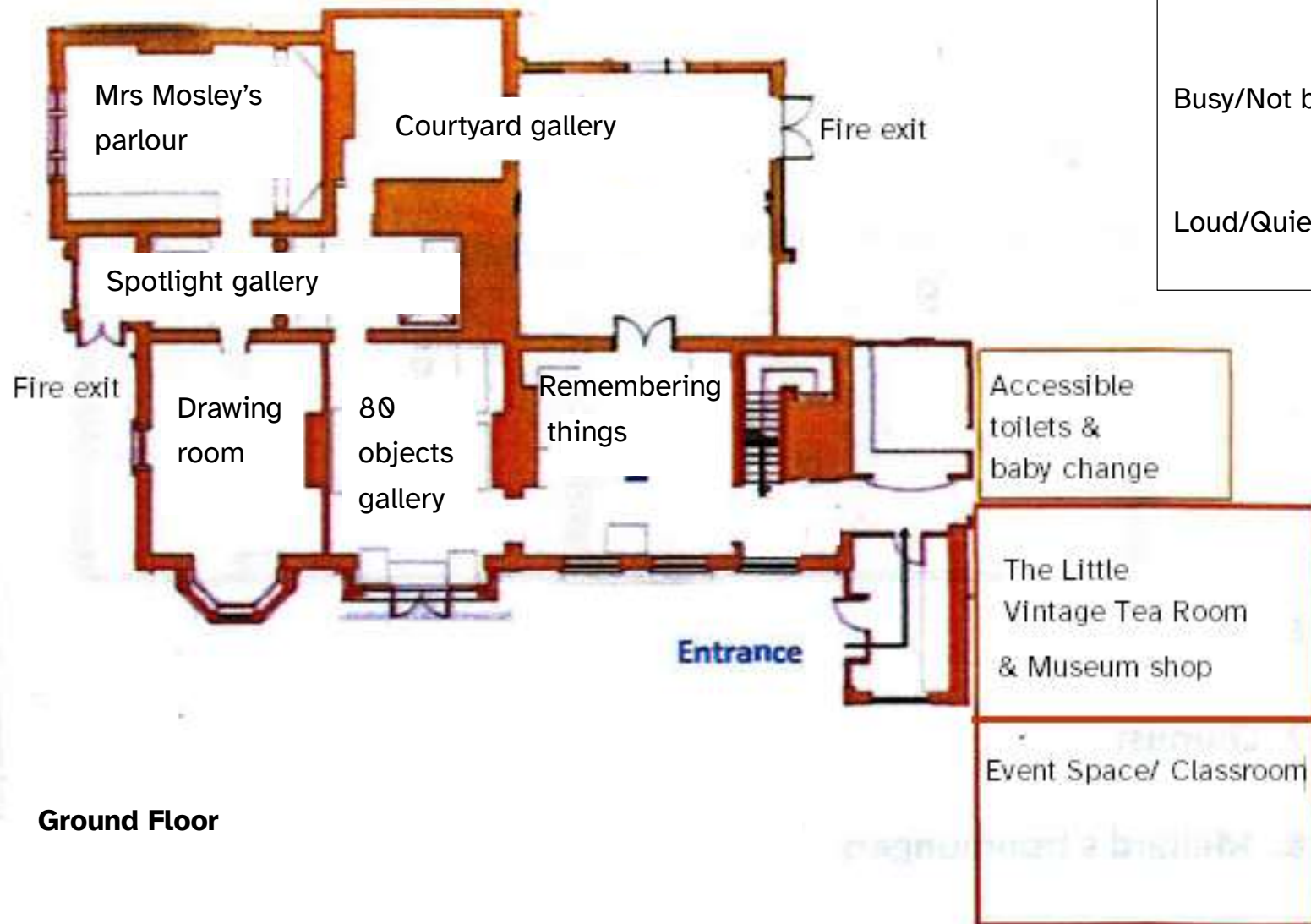
Light/ Dark



Busy/Not busy



Loud/Quiet



Ground Floor

Find out more at newcastle-staffs.gov.uk/easyaccess

Ground Floor

Entrance

Brightly lit, background noise, carpet floor



Toilets

Our accessible toilet has more space and includes hand towels

The Little Vintage Tea Room, Museum Shop, Event Space & Classroom

Busy, brightly lit, background noise, often busy, vinyl floor

Remembering Things

Brightly lit, quiet, vinyl floor



Jim Wain Courtyard Gallery

Brightly lit, quiet, vinyl floor moving to ceramic tile flooring

Mrs Mosley's Victorian Parlour

Darker space, includes 'talking portrait,' carpet flooring.
Often closed for school visits Tuesday and Wednesday.



The Drawing Room

Quiet, brightly lit, wooden floor, often closed for events



Spotlight Gallery and Newcastle in 80 Objects

Quiet, brightly lit, carpet floor

Quiet times

Our museum is usually quietest on Saturdays 10am to 11am and weekdays 4pm to 5pm.

Please note: school visits usually take place Tuesdays and Wednesdays 10am to 2pm, and our popular events tend to be Thursday and Saturday afternoons.

Quiet Space

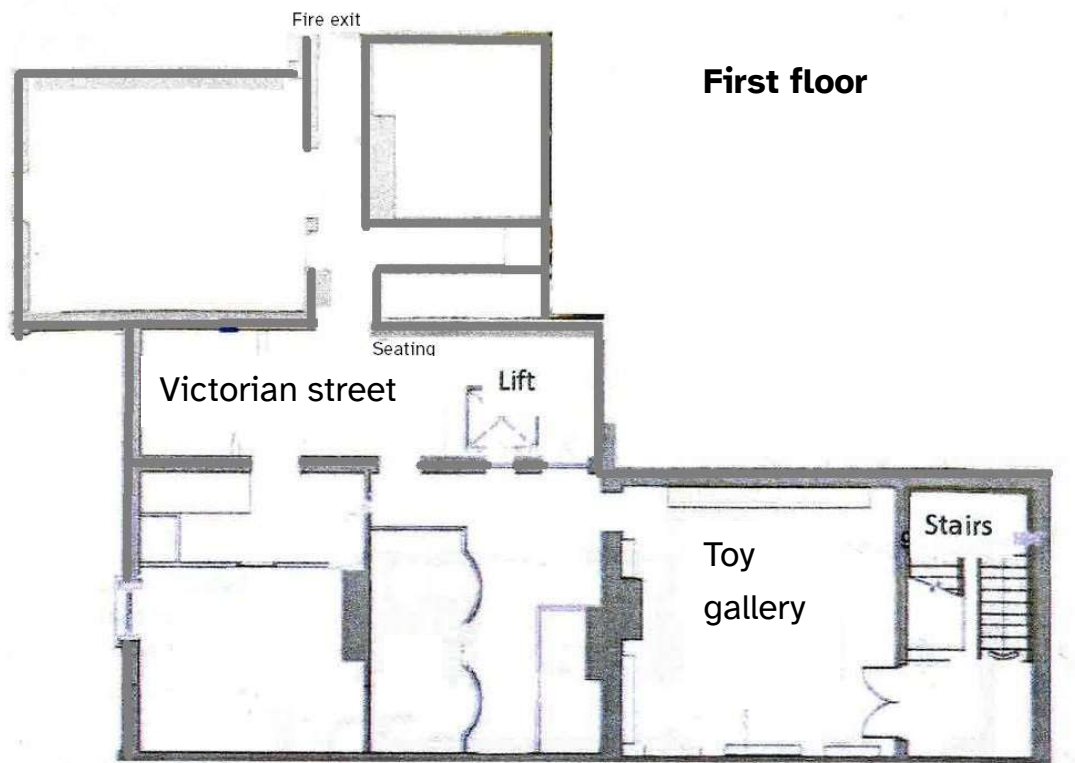
Please let us know before your visit if you would like to reserve a 'quiet space.'

Sensory borrow bag

The museum has free of charge 'borrow bags' with children's ear defenders and fidget toys which can be helpful for children with ADHD, autism or sensitivity to noises. Please ask at reception and make sure to return it before you leave.

Assistance dogs

Trained, registered assistance dogs are welcome at Brampton Museum. Water bowls are available from our tea room.



First floor

Toy Gallery

Brightly lit, often busy, school visits
Tuesday and Wednesday,
carpet floor



Victorian Street Scene

Low light level, usually quiet except for
school visits
Tuesday and Wednesday, faux cobble vinyl
floor



For more details

Brampton Museum is an award-winning, accessible museum and we're committed to being open and inclusive for everyone. If you need more information please contact us prior to your visit:

Phone: 01782 619705

Email: bramptonmuseum@newcastle-staffs.gov.uk